

# Human IgG1 Isotype Control(Anti-MOPC-21)

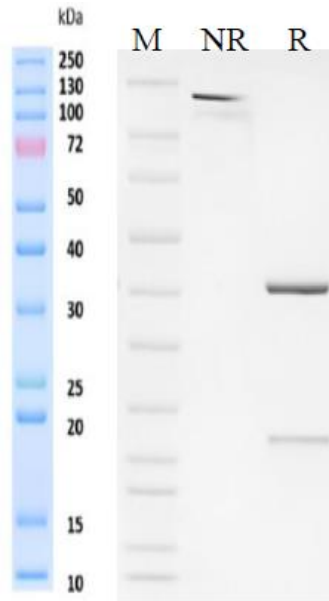
## Product Information

<b>Product Name</b>	Human IgG1 Isotype Control(Anti-MOPC-21)
<b>Storage temp.</b>	Store at 2-8°C short term (1-2 weeks).Store at $\leq -20^{\circ}\text{C}$ long term. Avoid repeated freeze-thaw.
<b>Catalog# / Size</b>	<b>GM-83073AB-1mg / 1 mg</b> <b>GM-83073AB-5mg / 5 mg</b> <b>GM-83073AB-25mg / 25 mg</b> <b>GM-83073AB-50mg / 50 mg</b> <b>GM-83073AB-100mg / 100 mg</b>

## Antibody Information

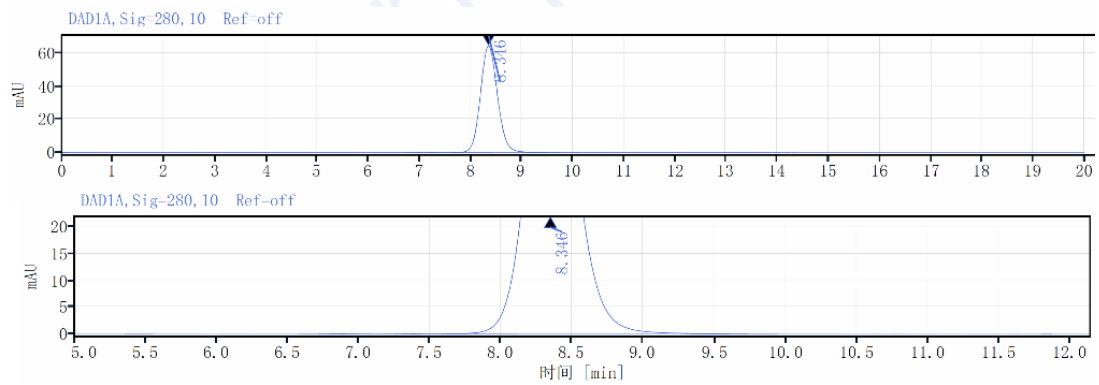
<b>Expression System</b>	CHO
<b>Aggregation</b>	< 5% as determined by SEC-HPLC
<b>Purity</b>	> 95% as determined by SDS-PAGE
<b>Endotoxin</b>	<1 EU/mg, determined by LAL gel clotting assay
<b>Sterility</b>	0.22 $\mu\text{m}$ Filtered
<b>Target</b>	/
<b>Clone</b>	/
<b>Alternative Names</b>	/
<b>Source/Isotype</b>	Monoclonal Human IgG1 (KEEM), kappa
<b>Application</b>	Negative control
<b>Description</b>	A homologous control antibody is an antibody that is used to control the target antibody in an experiment. The homologous control antibody should have the same immunoglobulin type and concentration as the test antibody, but not have the same specificity as the target antibody. It is often used to help researchers distinguish between non-specific signals and background signals in experiments to ensure the accuracy and reliability of experimental results.
<b>Formulation</b>	PBS, pH 7.4, Contains no stabilizers or preservatives

## SDS-PAGE



On SDS-PAGE under reducing (R)/non-reducing(N-R) condition. The gel was stained overnight with Coomassie Blue. The purity of the protein is greater than 95%.

## SEC-HPLC



The purity of this product is more than 95% verified by SEC-HPLC.